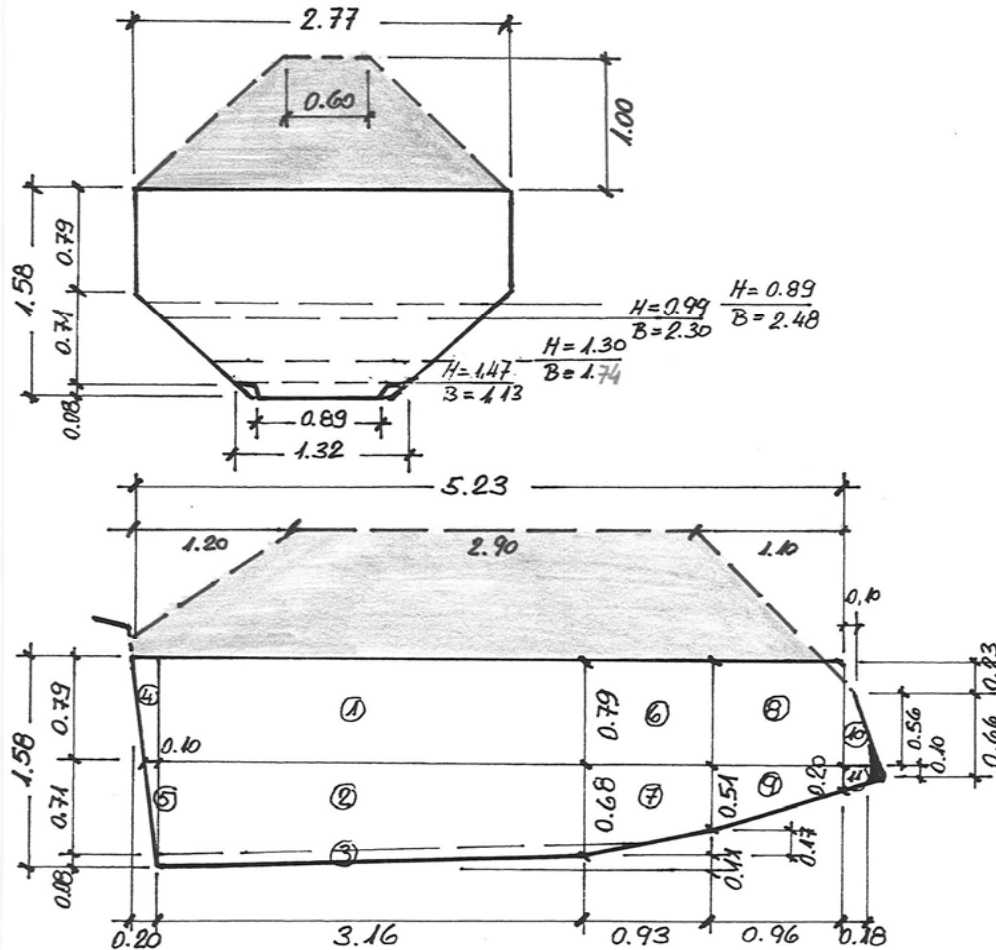


Lademenge Dumper

Typ : Volvo A35C, 6x6



Lademenge Mulde gestrichen (Wassermass)

- 1 $2.77 \times 0.79 \times 3.16 = 6.915$
- 2 $(2.77 + 1.32) \times 1/2 \times (0.71 + 0.60) \times 1/2 \times 3.16 = 4.233$
- 3 $(0.89 + 1.13) \times 1/2 \times 0.08 \times 3.16 = 0.255$
- 4 $2.77 \times 0.79 \times (0.20 + 0.10) \times 1/2 = 0.328$
- 5 $(2.77 + 1.32) \times 1/2 \times 0.71 \times 0.10 \times 1/2 = 0.073$
- 6 $2.77 \times 0.79 \times 0.93 = 2.035$
- 7 $((2.77 + 1.13) \times 1/2 \times 0.68 + (2.77 + 1.74) \times 1/2 \times 0.51) \times 1/2 \times 0.93 = 1.151$
- 8 $2.77 \times 0.96 \times 0.79 = 2.101$
- 9 $((2.77 + 1.74) \times 1/2 \times 0.51 + (2.77 + 2.30) \times 1/2 \times 0.20) \times 1/2 \times 0.96 = 0.795$
- 10 $(0.10 + 0.18) \times 1/2 \times 0.56 \times 2.77 = 0.217$
- 11 $((2.77 + 2.30) \times 1/2 \times 0.20 + (2.77 + 2.48) \times 1/2 \times 0.10) \times 1/2 \times 0.18 = 0.069$

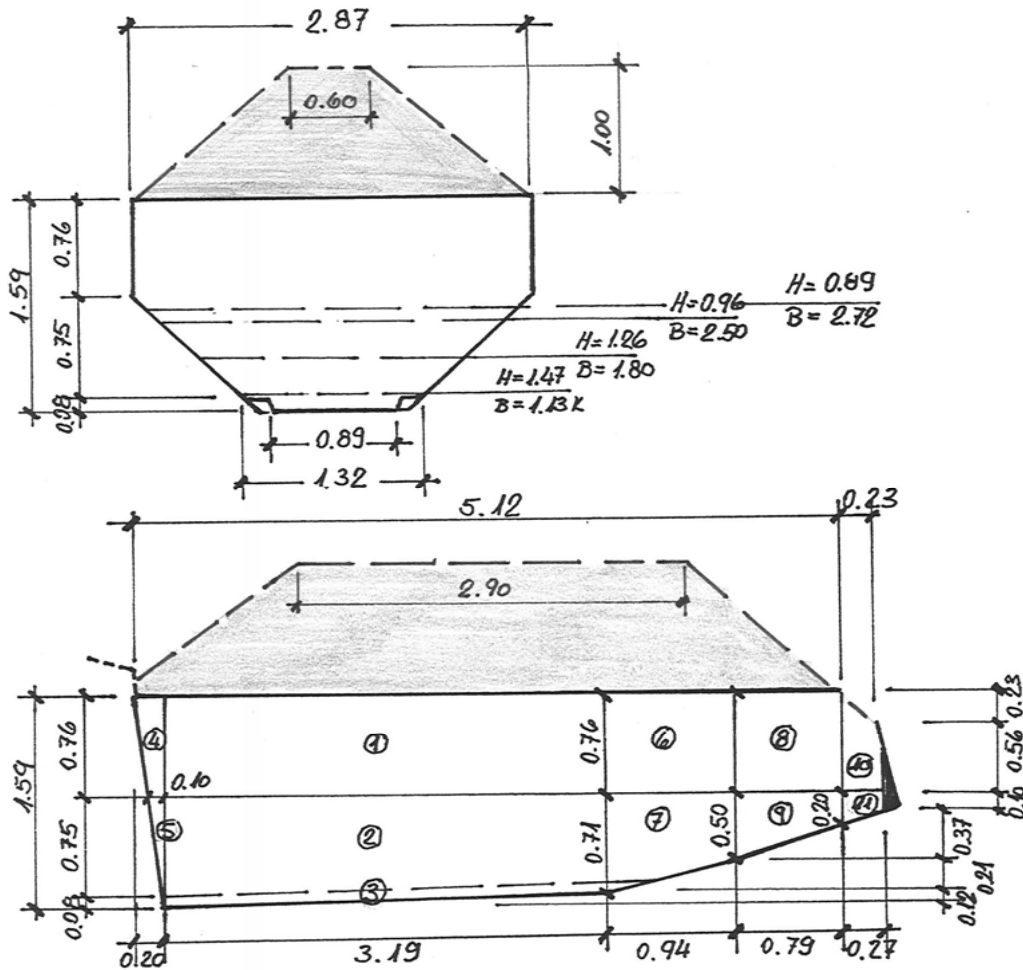
Total Lademenge Mulde gestrichen (Wassermass) 18.173

Ueberhöhung gemessen auf Fahrzeug

- 12 $(2.77 + 0.60) \times 1/2 \times (5.23 + 2.90) \times 1/2 \times 1.00 = 6.850$

Total Lademenge gemessen auf Fahrzeug m3 25

Lademenge Dumper Typ : Volvo A35D, 6x6



Lademenge Mulde gestrichen (Wassermass)

1	$2.87 \times 0.76 \times 3.19$	=	6.958
2	$(2.87 + 1.32) \times 1/2 \times (0.75 + 0.63) \times 1/2 \times 3.19$	=	4.611
3	$(0.89 + 1.13) \times 1/2 \times 0.08 \times 3.19$	=	0.258
4	$2.87 \times 0.76 \times (0.20 + 0.10) \times 1/2$	=	0.327
5	$(2.87 + 1.32) \times 1/2 \times 0.75 \times 0.10 \times 1/2$	=	0.079
6	$2.87 \times 0.76 \times 0.94$	=	2.050
7	$((2.87 + 1.13) \times 1/2 \times 0.71 + (2.87 + 1.80) \times 1/2 \times 0.50) \times 1/2 \times 0.94$	=	1.216
8	$2.87 \times 0.79 \times 0.76$	=	1.723
9	$((2.87 + 1.80) \times 1/2 \times 0.50 + (2.87 + 2.50) \times 1/2 \times 0.20) \times 1/2 \times 0.79$	=	0.673
10	$(0.23 + 0.27) \times 1/2 \times 0.56 \times 2.87$	=	0.402
11	$((2.87 + 2.50) \times 1/2 \times 0.20 + (2.87 + 2.72) \times 1/2 \times 0.10) \times 1/2 \times 0.27$	=	0.110

Total Lademenge Mulde gestrichen (Wassermass) 18.408

Ueberhöhung gemessen auf Fahrzeug

12	$(2.87 + 0.60) \times 1/2 \times (5.12 + 2.90) \times 1/2 \times 1.00$	=	6.957
----	--	---	-------

Total Lademenge gemessen auf Fahrzeug m3 25